



Pearson

The Mind's *Eye*



Issue 11



From the Director's desk

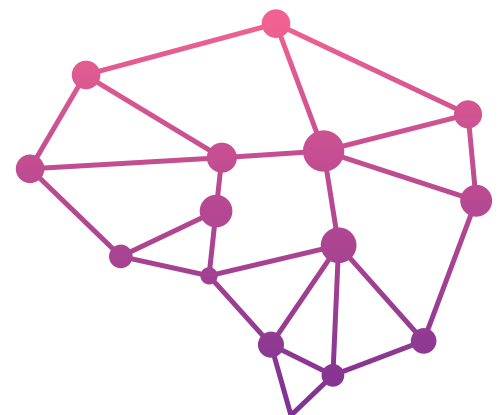
Philip Kurian,

Director and Country Manager,
Pearson Clinical and Talent Assessment.

In this evolving age of technology and its consequent impact on human psychology, the field of clinical psychology is today more relevant to humanity than it has ever been. On an everyday basis, we provide immense value to humanity by keeping its bearing intact in an ever-changing world. Never before have we encountered such a fluid state of technological evolution where new challenges spring up around us all the time. With rising awareness about mental health among the general public and an exponential increase in the number of cases that come up every day, these monumental challenges have become the new norm for the clinical psychology fraternity. We, therefore, need to embrace technology to the fullest in testing and diagnosis of mental health issues.

With a constantly multiplying range of sub-fields in psychology that touch every aspect of life, technology has become key to keeping up with the vast range of mental health issues we help diagnose and treat every day. Standing at the forefront of this new age of technology that aids and complements clinical psychology, I see a wave of innovative products that will revolutionize what we do over decades to come. Against this backdrop, it is imperative

that every practitioner in the field of clinical psychology recognizes the enormous value that innovative psychological testing and diagnosis products offer. Over this year, I foresee an increased transition to new testing products that will make a real difference to our lives and the lives of those we treat. What we do every day is nothing short of a miracle and on this positive note, I wish all of you a successful and productive mental health awareness month.



Language: the catalyst of growth

Greeshma Gautamaditya, M.Sc.

The development of receptive language begins in utero. The fetus begins to recognize the mother's speech patterns and distinguish them from other sounds. At birth, the neonate's cry serves as a highly significant biological function. An acoustic analysis of the birth cry holds a plethora of information related to the respiratory, laryngeal, and the nervous systems. Crying continues to serve as a mechanism to communicate the infant's needs. Thereafter, the neonate begins to vocalize different vowel sounds while experimenting with his voice, or, in response to other's interaction. Eventually, differential cry emerges, with a special cry for hunger, and an entirely different cry when the caregiver leaves the room. With age, the infant begins to expand his vocalization, babble and starts to use a range of deictic and representational gestures. Use of the first meaningful word bestows the infant with the magical ability to use spoken human language. Along with the development of the central, and peripheral nervous system, and, the sub-systems for speech, the toddler then moves on to attain more complex speech and language patterns. These complex speech and language patterns relate to the sounds (phonology), words (semantics), grammatical forms (morpho-syntax) and pragmatic use of language in conjunction with the correct articulation, fluency of speech and appropriate voice and resonance quality. At times, the child is exposed to one language and most often (in the

urban Indian context), more than one. Thereafter, as the child grows up to be an adult, the child's language mechanism deftly absorbs information encountered through various opportunities. These opportunities are utilized to expand his cognitive-linguistic scope by expanding his vocabulary, learning new meta-linguistic concepts or learning a new language itself.

Individuals with a delay, deviance or trauma during, or, after any stage of language development, require timely assessment and early intervention in the domains of oral motor abilities, speech (resonance, fluency, articulation, and voice), language, literacy, auditory skills, social-communication skills, cognitive-communication skills and AAC (Alternative and Augmentative Communication).

Standardised assessment tools direct a speech-language pathologist towards an accurate diagnosis. This diagnosis thereafter can serve other allied professionals in their course of intervention. Results from assessment tools helps an SLP initiate intervention targeting specific goals, that can be explicitly communicated to the clients and their families for a better prognosis through home practice. During the intervention program, timely assessment help an SLP chart out updated goals and gives a clear picture of the effectiveness of the intervention program adopted.

Professional of the month

Dr. Radhika Poovayya

Ms. Radhika Poovayya is a Speech Language Pathologist and Behavior Analyst. She is a consultant for children with autism, adults, and children with communication disorders and management of behavior problems. Ms. Poovayya has a Masters in speech and hearing science, from All India Institute of Speech and Hearing, Mysore, in 1987 and a Masters in behavior analysis from Florida Institute of Technology, USA. She is Certified by the US board for behavior analysts.

Ms. Poovayya started her career in Munnar, Kerala in by establishing the speech and hearing department in the TATA Tea hospital which the first such department in a plantation district. She was also involved in starting a special center for children with special needs in the district. Post her work in Munnar, she moved to Bangalore where she had worked as a speech pathologist in the special school for children with hearing impaired run by Dr. SRC Institute of Speech and Hearing. After a few years, she was offered the post of public relation officer. she took up the challenge and worked on improving the image of the institute and raise funds, In her time there, she had secured many international projects for the institute and organized many successful fundraisers.

After a short stint as a consultant at HOSMAT hospital and Manipal hospital, Ms. Poovayya in 2002 established 'Samvaad' a Speech Therapy Centre which is a private center for speech therapy of children and adults in Domlur, Bangalore. In 2005, She founded Samvaad Institute of speech and hearing which is an NGO that provides treatment for children and adults with speech and hearing disabilities located in Hebbal, Bangalore. the institute also conducts graduate and postgraduate programs in speech and hearing science (affiliated to Bangalore University) Presently, Samvaad had 4 clinics in Bangalore, Hebbal, Domlur, Marathahalli, and cloud nine Hospital (old airport road).

Ms. Poovayya has had administrative posts at the Governing Council of Rehabilitation Council of India (RCI), the Expert committee for speech-language pathology and audiology in RCI, Managing trustee of Samvaad Institute of speech and hearing and Samvaad Foundation. She has also presented close to a dozen papers in National and International conferences. And has been honored by The Rotary Club, Bangalore district with the **'COMMUNITY SERVICE AWARD'**

Dr. Poovayya can be reached at samvaadradhika@gmail.com



Featured institute of the month

National Institute of Speech and Hearing (NISH), Trivandrum, Kerala, India

The National Institute of Speech and Hearing (NISH) is an institute devoted to the education and rehabilitation of individuals with speech-language and hearing impairments located in Thiruvananthapuram, the capital city in the Indian state of Kerala. It was established in 1997 on the initiative of the Government of Kerala and is a comprehensive clinical facility as well as a self-financing affiliate college of The University of Kerala. Now NISH has expanded into neuro-developmental disorders also and has intervention programs for children in the Autism Spectrum and Cerebral Palsy.

NISH is an autonomous organization registered as a society by the Social Justice Department, Government of Kerala. It is an ISO 9001-2015 certified institute and has been awarded the following accreditations:

- "Excellent" institute by the Rehabilitation Council of India
- 'Grade A' institute by NAAC.

NISH is a comprehensive multi-purpose institute focusing on the identification, intervention, rehabilitation, and education of individuals with disabilities. Since its inception in 1997, NISH has made significant contributions to improving the quality of life of

individuals with communication disorders and have taken pioneering effort in implementing various programs for the disabled population across the state. NISH hosts a unique inclusive campus which has students and staff with diverse abilities.

The activities of NISH include:

- Implementation of various disability related projects of Govt. of India and Govt. of Kerala.
- Consultative work on policy formulation and implementation of disability as assigned by Government
- Trans-disciplinary assessment and intervention for various disabilities (Communication disorders, Autism Spectrum Disorders, Other Developmental Disabilities) by audiologists, speech language pathologists, physiotherapists, occupational therapists, special educators, psychologists, ENT doctors and Neurologists.
- Early intervention programs for young hearing-impaired children before school age
- Early intervention programs for young children in the Autism Spectrum

- Academic programs including degree courses for Hearing Impaired students with majors in

- Bachelor of Computer Science (BSc (CS))
- Bachelor of Commerce (B.Com)
- Bachelor of Fine Arts (BFA)

- Rehabilitation courses for preparing professionals such as

- Bachelor of Audiology and Speech-Language Pathology (BASLP)
- Master of Audiology and Speech Language Pathology (MASLP)
- Diploma in Early Childhood Special Education for Hearing Impaired (DECSE-HI)
- Diploma in Indian Sign Language Interpretation (DISLI)

- Assistive Technology (AT) assessment, implementation, and follow-up.
- Counselling and parent guidance.
- Camps and outreach programs such as Public Seminars, Hands-on workshops, CRE programs

- Social relevant research in the field of disability & rehabilitation

- Collaborative projects with institutions in India as well as international Universities in the USA, UK and Australia

- Faculty exchange programs with institutions working in similar areas both domestic and international

- Internship and employment support for students with industrial organizations

NISH website is nish.ac.in. NISH is active in the social media <https://www.facebook.com/nishtvm>. It has twitter handle [@nishindia](https://twitter.com/nishindia). The phone number to contact is +91-471-306-6666. Email: nishinfo@nish.ac.in. The Executive Director can be reached at exedir@nish.ac.in.

NISH has 7 days a week operation for clinics and follows a 5 day work week.



What's New From Pearson



Take your practice to the next level with the best assessments in the area *'Speech and language'*



Illustration by Amit nanda

Some of these assessments are also available on **Q-global**, our digital assessment platform.

Contact Us

Pearson Clinical and Talent Assessment

Phone: +91 9243600012 | Email: info@pearsonclinical.in | Website: www.pearsonclinical.in

@thinkclinical Pearson Clinical India Pearson Clinical India

Pearson Clinical & Talent Assessment

A Wing 11, DivyaSree Chambers, 7th Floor, O' Shaughnessy Road, Bengaluru - 560 025, Karnataka, INDIA.